

**CCS**

people • place • enterprise



**Somerset  
Wildlife Trust**

# Making space for nature at your village hall and associated green spaces - Useful Links





## Useful Links



**CCS**  
people • place • enterprise



**Somerset Wildlife Trust have lots of useful advice and resources to support you to take action for nature in your community**

### **Actions for nature**

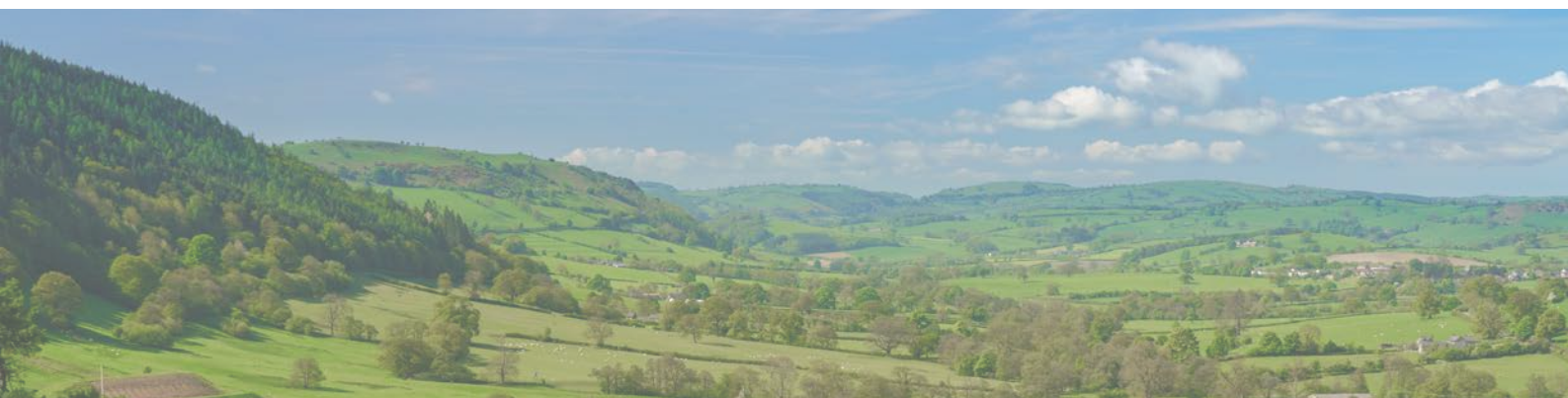
[www.somersetwildlife.org/actions](http://www.somersetwildlife.org/actions)

### **Useful plant spotting resources:**

- FSC (Field Studies Council) fold out guides: [www.field-studies-council.org/shop/](http://www.field-studies-council.org/shop/)
- Online spotter sheets: [www.plantlife.org.uk/uk/discover-wild-plants-nature/spotter-sheets](http://www.plantlife.org.uk/uk/discover-wild-plants-nature/spotter-sheets)
- [www.wildlifewatch.org.uk/activities](http://www.wildlifewatch.org.uk/activities)
- Apps such as Seek by iNaturalist
- The Wildflower Key by Francis Rose

### **Wildlife ID apps and resources:**

- FSC guides
- Most conservation charities have online ID guides:
  - [www.butterfly-conservation.org/butterflies/identify-a-butterfly](http://www.butterfly-conservation.org/butterflies/identify-a-butterfly)
  - [www.rspb.org.uk/birds-and-wildlife/bird-songs/what-bird-is-that/](http://www.rspb.org.uk/birds-and-wildlife/bird-songs/what-bird-is-that/)
  - [www.buglife.org.uk/bugs/identify-a-bug/](http://www.buglife.org.uk/bugs/identify-a-bug/)
- Apps such as 'Seek' by iNaturalist (useful guides but check a book or google!)





## Community mapping linked to iNaturalist

- [www.somerc.com/community-wildlife-mapping/](http://www.somerc.com/community-wildlife-mapping/)
- Let us know if this is something you are interested in for your community

## Get involved with the Great Somerset Wildlife Count

Visit: [www.somersetwildlife.org/wildlife/great-somerset-wildlife-count](http://www.somersetwildlife.org/wildlife/great-somerset-wildlife-count)

## Add your group to the Team Wilder map!

Visit:

[www.somersetwildlife.org/get-involved/team-wilder/team-wilder-map](http://www.somersetwildlife.org/get-involved/team-wilder/team-wilder-map)

## Team Wilder resources

Visit: [www.somersetwildlife.org/get-involved/team-wilder](http://www.somersetwildlife.org/get-involved/team-wilder)

## Wilder Community Action Pack

[www.somersetwildlife.org/sites/default/files/2022-06/TW%20Community%20Empowerment\\_Online\\_1.pdf](http://www.somersetwildlife.org/sites/default/files/2022-06/TW%20Community%20Empowerment_Online_1.pdf)





## Useful Links



**CCS**  
people · place · enterprise



### Recordings of dedicated online events

Visit: [www.somersetwildlife.org/wildlife/swt-tv/training](http://www.somersetwildlife.org/wildlife/swt-tv/training)

- Woodland creation: Right tree, right place for Mendip: natural regeneration and tree planting
- Pond creation and restoration
- Hedgerow management and creation: Great British Hedgerow Survey with PTES
- Grassland management, restoration and creation
- Agroforestry

### Wilder Churches – lots of relevant advice!

Visit: [www.somersetwildlife.org/events/wilder-churches](http://www.somersetwildlife.org/events/wilder-churches)

- Wilder Churches online event recordings, including advice and resources on:
- Getting to know plants, wildlife and habitats in your community
- Raising awareness and involving others in your community
- Consulting your community
- Grassland management, restoration and creation
- Hedgerow management
- Other beneficial actions for nature

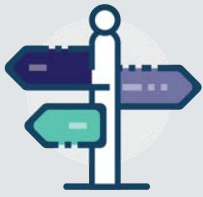
© Matt Sweeting



**Get in touch:**  
**[Pippa.Rayner@somersetwildlife.org](mailto:Pippa.Rayner@somersetwildlife.org)**  
**and [teamwilder@somersetwildlife.org](mailto:teamwilder@somersetwildlife.org)**



# CCS and Somerset Wildlife Trust have joined up to support communities to take action for nature



**CCS**  
people • place • enterprise



**Somerset  
Wildlife Trust**



**01823 331222**



**[info@somersetccc.org.uk](mailto:info@somersetccc.org.uk)**



**[www.ccslovesomerset.org](http://www.ccslovesomerset.org)**

Viney Court, Taunton, TA1 3FB Community Council for Somerset is a Company Limited by Guarantee, Registered in England and Wales No. 3541219 and is a Registered Charity No. 1069260.

Part of



**01823 652400**



**[teamwilder@somersetwildlife.org](mailto:teamwilder@somersetwildlife.org)**



**[www.somersetwildlife.org](http://www.somersetwildlife.org)**